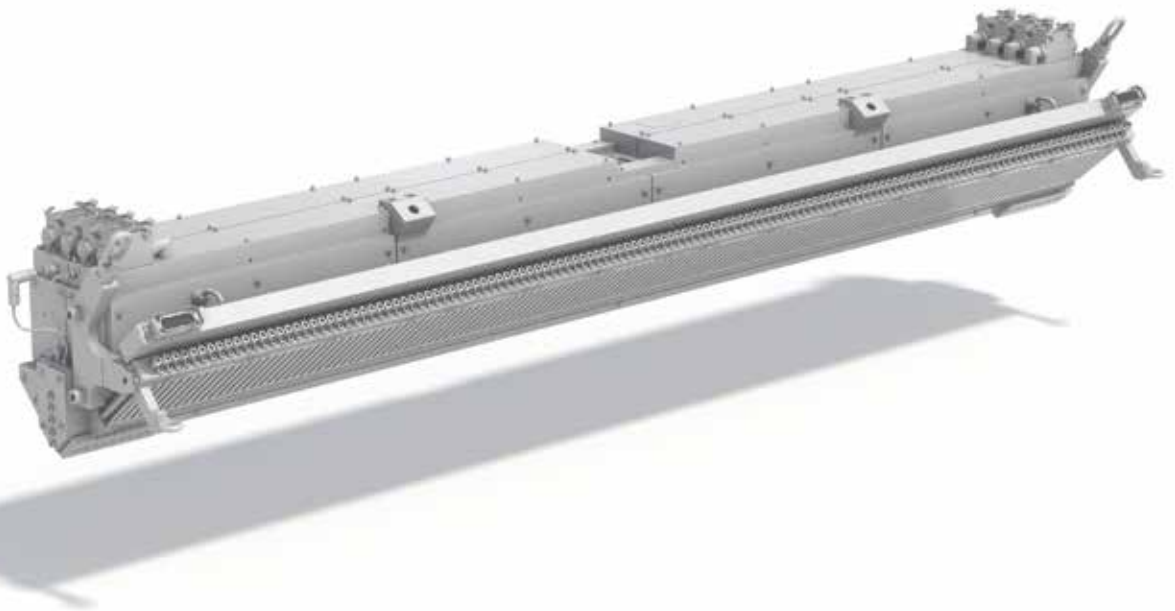




Reifenhäuser

EXTRUSION SYSTEMS

The Extrusioners



Flat die Cast film

Flat dies for the production of monolayer and multilayer cast films. Fine profile control by manual or automatic flex lip adjustment. Perfect film quality due to optimized external or internal deckling systems for a minimum distance between the die gap and the casting roll. Reduced raw material costs by internal edge encapsulation.

Flat die Portfolio for cast film

Type	Two-part die body with flex lip in the upper die body with an adjustment range of 2.5 mm	Options	Die lip adjustment: Manual push, manual push with differential adjustment, manual pull/push combination, automatic push, automatic pull/push
Applications	CPP film, CPE film, barrier film for food packaging, hygiene film, medical film, technical film, surface protection film, etc.		Width adjustment: External or internal deckling, combination of internal and external deckling, internal deckling with edge encapsulation
Raw materials	PP homo, PP copo, PET, LDPE, LLDPE, HDPE, PA6, EVOH, EVA, TPU, PLA, etc.		Edge encapsulation
Width range	75 – 8000 mm		Die lip heating
Die gap range	0.05 – 1.2 mm		Rapid Flex
			Die body insulation
			Lip inserts
			PAM Option
		Surface coatings	Chrome, multilayer chrome, CrN mod, special polymer coating, tungsten carbide